



Letter from the President

Many of you may be surprised to learn that 2008 is in fact the 10th Anniversary of the Friends! As we contemplate this most significant of milestones, I am reminded of a quote by Vincent van Gough...

'Great things are not done by impulse, but by a series of small things brought together.'

Certainly the Gardens already stand as testament to the cumulative power of collective action and I am sound in the knowledge that the many 'small things' done by the Friends, day by day over the past 10 years, have made a very real difference and are playing their part in the creation of something truly 'great'.

To help mark our 10th year, I believe it is fitting that our Gardens are proud hosts of this year's Conference of the Network of Regional Botanic Gardens (NRBG), from Wednesday, 16th July to Saturday, 19th July. This biennial conference will bring together designers and curators, as well as a wide range of people with an interest in Regional Botanic Gardens.

On Friday, 18th July the Friends are hosting a Gala Dinner, which will serve as both the NRBG conference dinner, as well as the Friends 10th Anniversary celebration dinner. Further details will be available shortly, but be sure to lock this night into your diary now, as it will be an occasion not to be missed!

Our next Planting Day is coming up soon on Sunday, 30th March. Planting activities run for two hours, starting at 8am, through to 10am. We would love to see you there, so bring your family and friends for some planting fun in the Gardens.

Please take a moment also to make a note of the dates of the two following Planting Days for this year: Sunday, 27th July (National Tree Day) and Sunday, 14th September (Spring Planting Day).

As the pace of this New Year already begins to quicken, there is a mountain of work being done by Kate Heffernan, Patrick Whiteley and the rest of Council's Botanic Gardens team, bringing to fruition the many development projects planned for 2008/09, including the Childrens Garden, 'Hub' building, Mangroves to Mountains paths and horticultural signage. You will have the opportunity to read about the progress of these exciting projects in future editions of the Friends News, as well seeing them first hand as you stroll through the Gardens over the coming months.

Nick Bloor MPLA MAIH AIMM

0411 348 611

Autumn

Planting Day

Sunday 30th March

Planting 8-10am

Rosser Park,
Ashmore Road

Friends merchandise,
books and local native
plants sale.

Next Friends

Committee Meeting

Monday

31st March 2008

5.30pm

Gold Coast City Council -
Meeting Room 4 Nerang
Bicentennial Centre,
Nerang Southport Road,
Nerang.

Committee meetings are
now 'open' so all
Friends members are
welcome!



Botanical Information Field Workshop

By Helena Kelso

Of the many ways to learn about the botanical aspects of the Gold Coast and hinterland, there is nothing better than gaining a hands-on appreciation as an aid to learning. Recently I had the good fortune to be part of a one day field trip led by an expert in the field with a truly multi-disciplinary background. Imagine someone who could speak from a perspective of botany, silviculture, geology, climatology and bio-diversity!

That person was Ashley Sewell, then Resource Officer with the Nambour office of the Department of Natural Resources and Water. Along with a group of staff from the Currumbin Sanctuary, we visited six locations in the Gold Coast and hinterland region. This was not a time for being dewy-eyed - we saw the reality of what is growing there now and why; surmised about what may have been there in the past and the possible impact of changing climate.

A supporting written guide detailed the geology of the region along with the generic descriptions of landscapes and landzones. Botanical descrip-

tions of fifteen of the main species of timber trees found in the region were drawn from Ashley's recently revised book "Australian Timbers – Volume One". Each location was detailed in terms of the soil, landscape, landzone, common trees, common understorey and its relevant regional ecosystem description.

Our first stop was the Pine Ridge Conservation Park at Hollywell. This example of coastal lowlands Wallum vegetation is very rare now in the Gold Coast coastal fringe. Sand dunes had formed naturally-occurring swales dominated by Broad-leaved teatree (*Melaleuca quinquenervia*). Other major species included Pink bloodwood (*Corymbia intermedia*) and Wallum banksia (*Banksia aemula*). Next stops were to examine wet sclerophyll forest at the Coolbunbin Creek crossing on the Nerang-Beaudesert Road and then dry sclerophyll forest in the Clagiraba Forest Reserve adjacent to Clagiraba Road. Species of note included the Silver Quandong (*Elaeocarpus grandis*), Forest Red Gum (*Eucalyptus tereticornis*), Spotted Gum (*Corymbia citriodora*) and the grass tree *Xanthorrhoea* sp.

Following lunch at the Canungra Hotel, we



Sharp Park – Coomera River



Friends 10th Anniversary Gala Dinner Friday 18 July 2008... and Network of Regional Botanic Gardens Conference

Can you believe it?...Ten years! Well, the efforts of the Friends have been rewarded with the early stages of the Gold Coast Regional Botanic Gardens showing promise and more exciting works underway. This year we have a great opportunity to celebrate the achievements to date and to focus on our continuing support for the ongoing development of our Botanic Gardens.

Invitations will be coming soon to all Friends members to attend the Gala Dinner. After the success of our Inaugural Dinner in July last year, we are looking forward to an even bigger event this year!

The Gold Coast Regional Botanic Gardens is hosting the biennial conference of the Network of Regional Botanic Gardens from Wednesday 16 July to Saturday 19 July. This Network includes all Queensland regional botanic gardens and representatives from Darwin and Coffs Harbour will also be attending. Friends will host the Conference dinner as part of our 10th Anniversary Dinner.

So, mark your diaries; this is one you will not want to miss!

changed direction towards Beechmont, stopping first at Sharp Park on the banks of the Coomera River. This alluvial creek flat provided the opportunity for a discussion of creek hydrology and the impact of major weeds along the banks. Examples of the latter included Chinese Elm (*Celtis sinensis*) and Camphor Laurel (*Cinnamomum camphora*). Little did we know that just where we stood, as shown in the photo below, the water level of the flooded creek in January this year would have been many times over our heads!

Stop five was to examine dry sclerophyll forest along the Beechmont-Canungra Road. Major species included Pink Bloodwood (*Corymbia intermedia*), White Mahogany (*Eucalyptus acmenoides*), Tallowwood (*Eucalyptus microcorys*) and Turpentine (*Syncarpia glomulifera*).

Our final stop was at Rosin's Lookout Conservation Reserve, Beechmont, adjacent to the popular hang-gliding launch site. This provided the only example of rainforest, ably demonstrating species such as the Rough-leaved Elm (*Aphananthe philippensis*), Hoop Pine (*Araucaria cunninghamii*), Brown Tulip Oak (*Argyrodendron trifoliolatum*) and Flame Tree (*Brachychiton acerifolius*).

In all, a wonderful but all too brief experience! Now that Ashley has recently retired from Natural Resources and Water, he is arranging for similar field workshops in the future to be hosted by SEQ Catchments. These field trips are typically held on a weekday and require the commitment of about a dozen interested people.



...Garden Guides...

We have begun to conduct guided walks of the Botanic Gardens. Several Friends took people who attended the Gardens Alive 2007 last October on guided walks during the course of the day. We have also responded to enquiries from a few clubs who have planned an outing in the Gardens and provided Garden Guides to show people around the Gardens. It may surprise you to hear that some people think the Gardens end at the parking area!

We have developed a Guiding Manual and are planning to conduct training workshops in coming months. A Garden Guides Group is being formed. There are bound to be some keen would-be Garden Guides among Friends, so we would really like to hear from you.

Please contact Mary Woods (PH 0410 576 279; mtwoods@iprimus.com.au)



friends noticeboard



Gardening Australia Expo Brisbane 18-20 April 2008

Brisbane Exhibition Centre South
Bank 9.30am-4.30pm daily

"get hands on experience with the experts..."

Don't miss the opportunity to gain expert advice from ABC TV's *Gardening Australia* program presenters. We can pre-order discount tickets. The normal adult price is \$15, Seniors \$13, Children (5+) \$6, Family (2 adults+3) \$38. The pre-booked price for 10 or more is \$12 each. Once purchased these tickets can be used on any day of the expo and you do not have to attend as a group. If you would like a discount ticket **contact Mary by 30 March.**

Mary Woods 0410 576 279
mtwoods@iprimus.com.au

Membership Reminder

Welcome to New Members and a reminder for us all - your membership status is included as the first line in the address label of your Newsletter. Please remember to keep an eye on this and update your membership as necessary. Our membership year starts on 1st September, so memberships are shown as paid to 31st August. A renewal slip will come out with the first Newsletter after 1st September.

If you ever have any questions about this please feel free to call me on 5537 3354.

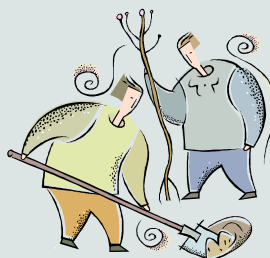
Peter Reilly, Treasurer

Next Planting Day...

**Sunday 30th
March**

Planting 8am - 10am

Enquiries to Mary Woods (Secretary) 0449 561 674

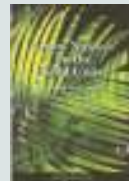


Buy Your Plant Books from the Friends and SAVE!!!

Grow Natives on the Gold Coast

by Graham McDonald

Rrp \$15 **Friends' price \$10**

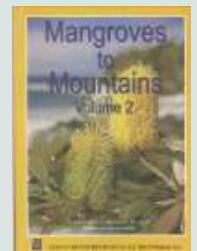


Mangroves to Mountains Vols. 1 & 2

by Logan River SGAP

Rrp \$45 ea

Friends' price \$35 ea



Create More Butterflies

by Helen Schwenke & Frank Jordan

Friends' price \$25

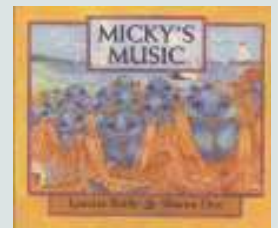


Micky's Music

(picture book about soldier crabs)

by Lynette Reilly

Friends' price \$5



See them on Planting Day...

Buy them on Planting Day!

Friends Merchandise

Buy your next hat, cap, mug or shirt from us. The Friends have a range of merchandise that tells everyone you are proud to be 'helping the Gardens grow'.



See the range of mugs (new!), bucket hats, peaked caps and green polo shirts at the next Planting Day.

A big thank you...

to the office of John-Paul Langbroek - local MP for Surfers Paradise, for generously providing photocopying services for our newsletter!

'08 COMMITTEE

President
Nick Bloor

Vice President
Gareth Davis

Treasurer
Peter Reilly

Secretary
Mary Woods

Newsletter Editor/
Webmaster
Caroline Kelly

Planting Day Coordinator
Alan Donaldson

Fundraising Coordinator
Gary Lyll

Archivist
Helena Kelso

Ausplants Representative and
Botanica Coordinator
Lynette Reilly

General Committee
Desley Acton
Wal Anderson
Kris Tayler

Senior Project Officer
GCRBG
Kate Heffernan

Patron
Gene Rosser

Botanica Patron
Cr Susie Douglas

Founder
Kate Heffernan